

# SOLID Wall

Based on SOLID Bifacial

191 W  
/m<sup>2</sup>

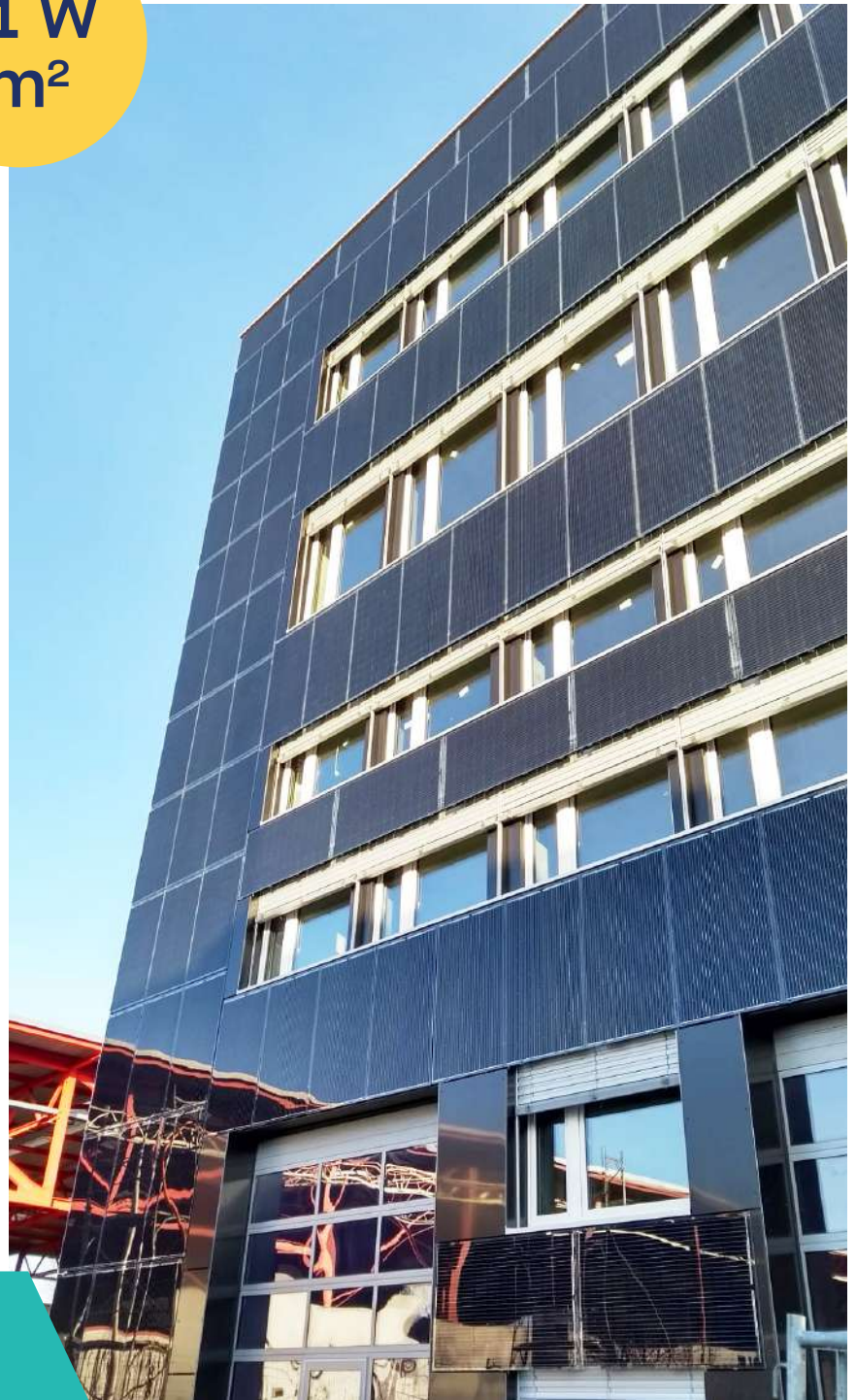
Plain and  
simple  
installation

Fast system  
assembly  
time

Invisible  
mounting  
materials

Sustainable  
and affective

Fits all  
wall types



60 cells ⚡ 360 W

10 Year  
product  
warranty

87 % Power  
guarantee

30 Year  
efficiency  
guarantee

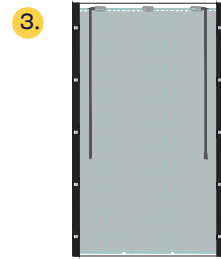
# Construction drawing



1. Fixing bracket is fixed to the wall

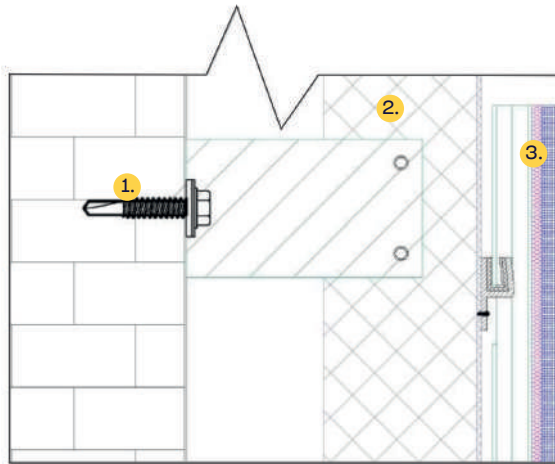


2. Standart T or L profile as guiding rail with preassembled hooks is fixed to the bracket

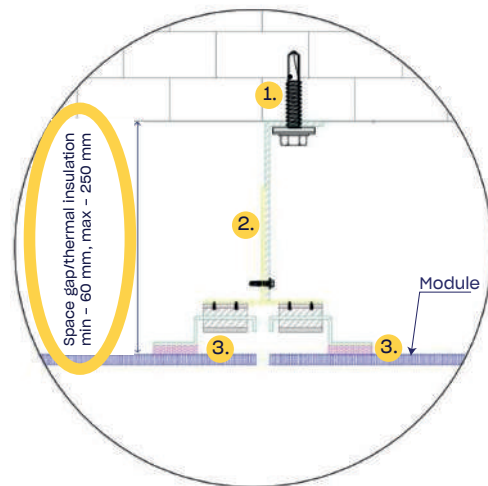


3. Frameless PV Module with special glued profiles on the back face is attached on the hooks.

## Vertical section



## Horizontal section

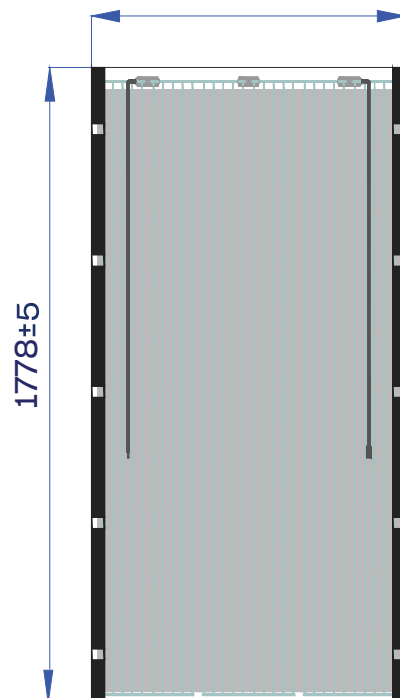


## Mounting construction

- **Step No. 1.** Positioning and fixing of brackets
- **Step No. 2.** Fixing T/L profiles
- **Step No. 3.** Installing PV panels

## Portrait

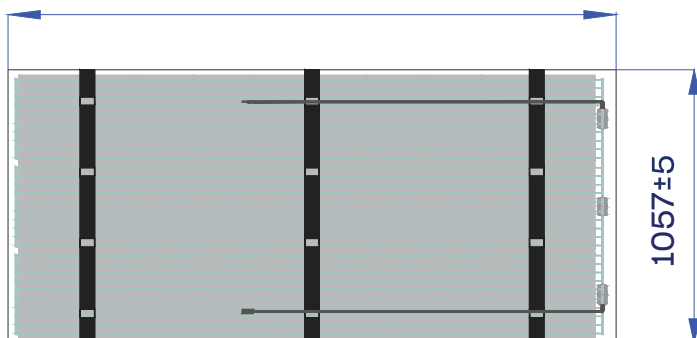
1057±5



60 cells 2400 Pa wind load

## Landscape

1778±5



60 cells 2400 Pa wind load