

# SOLID Wall

Based on SOLID Bifacial

Plain and simple  
installation

Fast system  
assembly time

Invisible mounting  
materials

Sustainable  
and affective

Fits all wall  
types

191 W  
/m<sup>2</sup>



60 cells ⚡ 360 W

**10** Year  
product  
warranty

**87%** Power  
guarantee

**30** Year  
efficiency  
guarantee

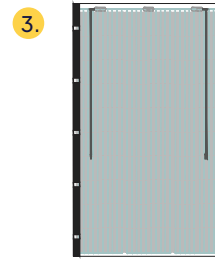
## Construction drawing



1. Fixing bracket is fixed to the wall

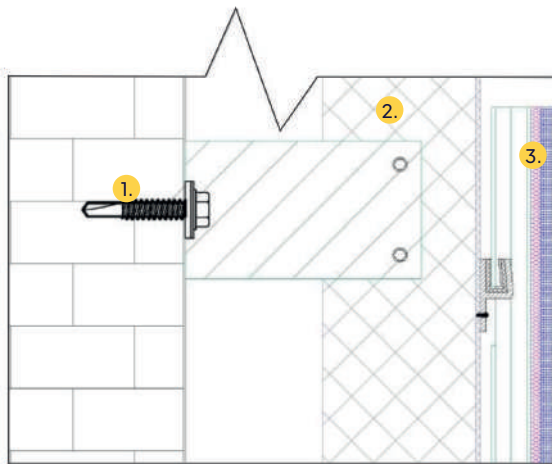


2. Standart T or L profile as guiding rail with preassembled hooks is fixed to the bracket

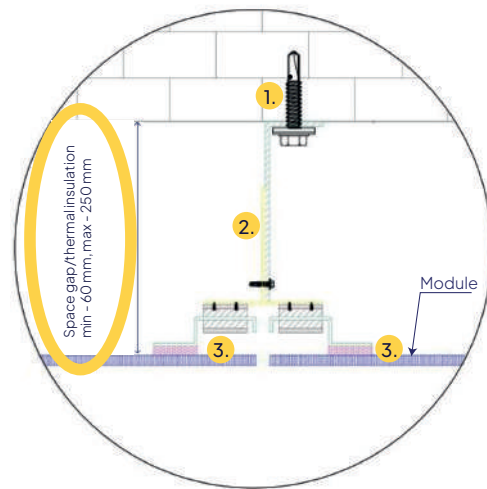


3. Frameless PV Module with special glued profiles on the back face is attached on the hooks.

### Vertical section



### Horizontal section

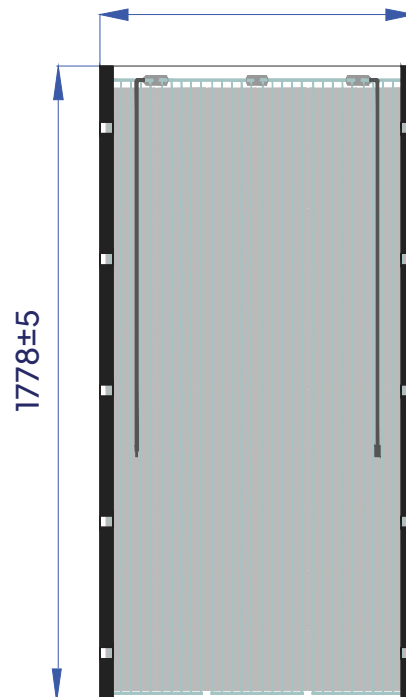


## Mounting construction

- Step No. 1. Positioning and fixing of brackets
- Step No. 2. Fixing T/L profiles
- Step No. 3. Installing PV panels

### Portrait

1057±5



1778±5

60 cells 2400 Pa wind load

### Landscape

1778±5



1057±5

60 cells 2400 Pa wind load