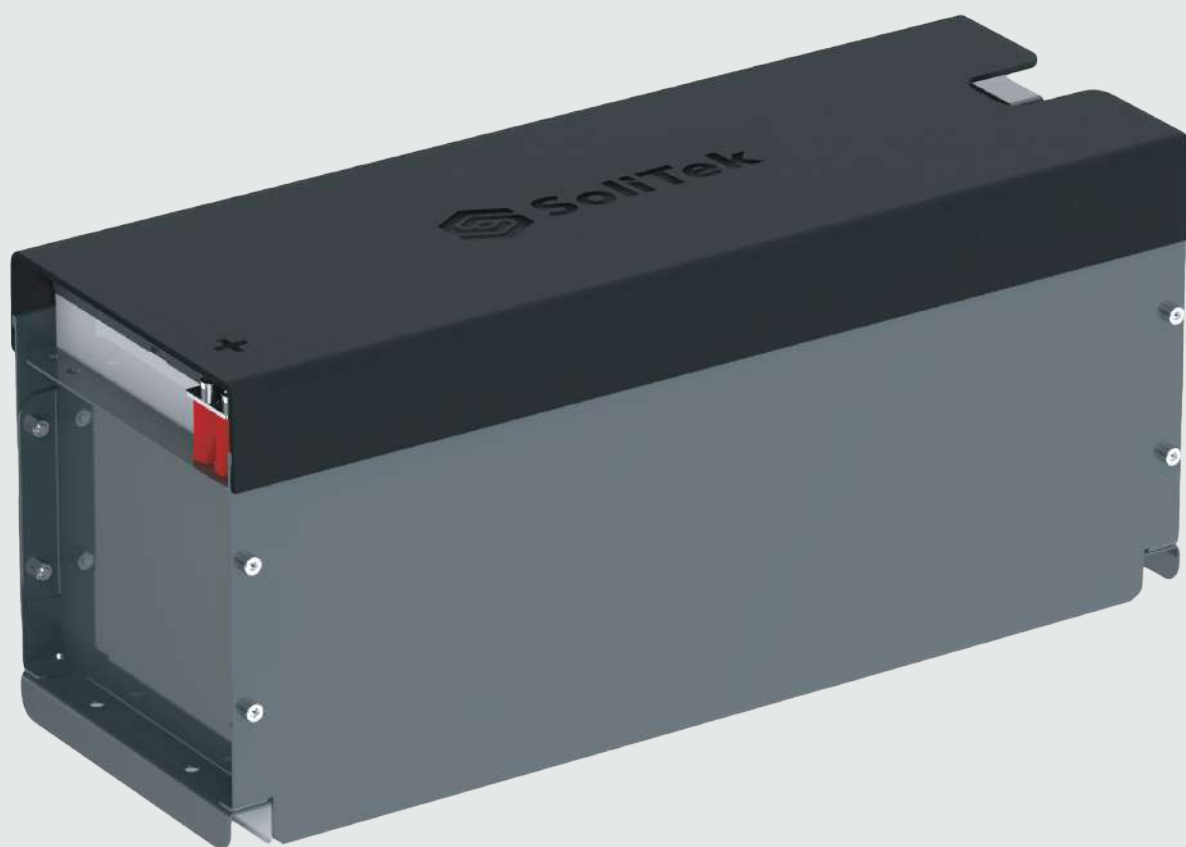


Battery Module

16s100Ah



Safest
electrochemistry: LFP



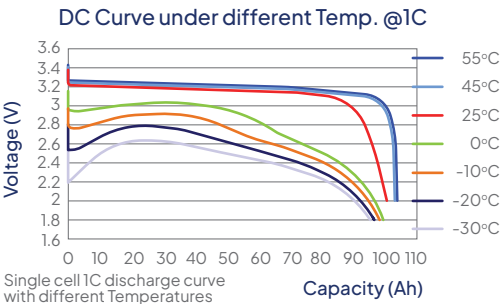
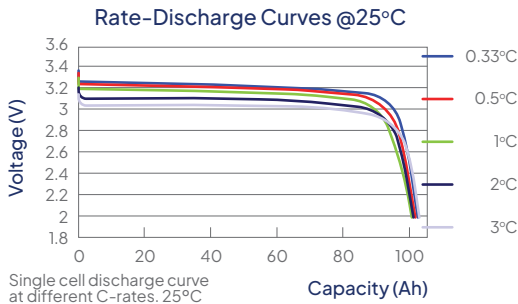
High quality cell:
top 5 manufacturer



Automated module
assembly production line



Designed and
assembled in Europe

Module Information			
Module	5.12kWhLFP100	Nominal	5.12 kWh
Lithium cell type	LiFePO4 3.2V 100Ah	Nominal voltage	51.2 Vdc
Cells combination	16S1P	Voltage operation range	32 – 58.4 Vdc
Nominal capacity	100Ah (1C)	SOC-OCV	Curves available for BMS implementation
Charge			
Standard charge at 25°C	Standard CC&CV charge curve: Constant current: 50 A until 3.65Vdc. Constant voltage: 3.65Vdc until current less 5 A.		
Temperature range	0 to 55°C		
Discharge			
Standard discharge current	1C (100A)	Temperature range	-30 to 60°C
 <p>DC Curve under different Temp. @1C</p>		 <p>Rate-Discharge Curves @25°C</p>	
Protection thresholds			
Overcurrent protection	Fuse 150A (built-in the module)	Over-voltage trip threshold	3.8Vdc Power off
		Over-voltage alarm threshold	3.7 Vdc Power off for more than 5 s
High temperature trip threshold	60°C	Maximum working voltage	3.65 Vdc
High temperature alarm threshold	55°C	Minimum working voltage	2.5 Vdc (0° to 55°); 2 Vdc (-30°C to 0°C)
Low temperature alarm threshold	-20°C	Under-voltage alarm threshold	2.2 Vdc (0° to 55°); 1.9 Vdc (-30°C to 0°C)
Low temperature alarm threshold	-30°C	under-voltage trip threshold	2.0 Vdc (0° to 55°); 1.8 Vdc (-30°C to 0°C)
Module dimensions			
Weight	38.2 Kg	Width	200.4mm
Length	511.1mm	Height	228.1mm
Working and storage environment			
Optimal working temperature	+10°C to +35 °C	Storage SoC	30 up to 50 %
Storage temperature	≤35°C	Working/storage relative humidity	<85 %RH
Lifetime			
Cycle life	6000 @25°C, 0.5 charge and 1C discharge, 100%DOD; 2500 @45°C, 0.5 charge and 1C discharge, 100%DOD		
Calendar life	15 years @ 25°C. 70% EOL		
Module measurements			
Temperature sensors	3 NTC	Voltage	Voltage measurement in each cell. 16 in total
Communication connector	Molex 24 pins		
Power terminals			
Negative terminal	2 x M5	Positive terminal	2 x M5 (fuse terminal)
Certifications			
Test certification	IEC 62619, UN38.3		