

SOLID ePIT

Solar Carport



Extreme load resistance - 10500 Pa (can hold an elephant)



Flameproof excellence - Fire class A rating.



Up to 20 % more power generation with bifacial solar modules.



3+ 3 mm tempered glass.



Sustainably made in Europe



Hail resistance up to 39 mm.

30
YEARS
GUARANTEE

Unprecedented 30 years guarantee with 90 % efficiency after 30 years.

50
YEARS

Expected lifetime: 50 years. Tested.



World's and only Cradle to Cradle Gold certified solar modules.

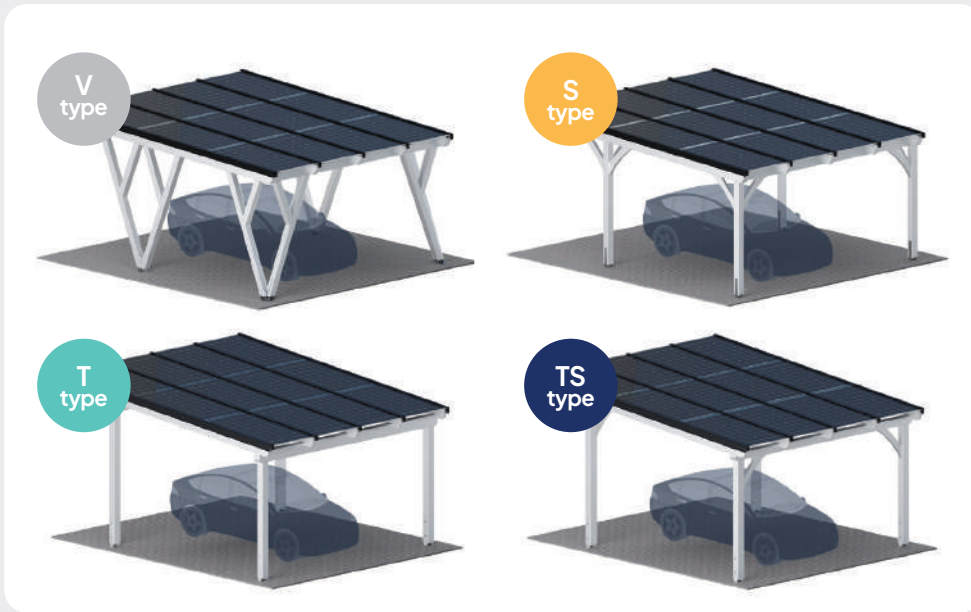


DiBT - overhead certificate in progress: all tests successfully passed.



Custom design

Modular design carports offer the flexibility of choosing the **number of bays, ranging from 1 to unlimited**, to fit your specific needs. Timber structure of carport is an excellent option for those seeking a customizable, sustainable and adaptable solution for their outdoor shelter needs.



27 m/s 
Wind load

UP TO 2.2 kN 
Snow load

SOLID ePIT	Type	Power	Dimensions (LxW)	Packaging (LxWxH)	Construction weight
12 V (1 car)	V	4.44 kW	5294x4370 mm	5400x800x900 mm	1400 kg
15 V (2 cars)		5.55 kW	5302x5447 mm	5400x800x900 mm	1500 kg
12 S (1 car)	S	4.44 kW	5294x4370 mm	5400x700x800 mm	800 kg
15 S (2 cars)		5.55 kW	5302x5447 mm	5400x800x1200 mm	1500 kg
12 T (1 car)	T	4.44 kW	5286x4369 mm	5400x900x700 mm	800 kg
15 T (2 cars)		5.55 kW	5286x5445 mm	5500x800x800 mm	1100 kg
12 TS (1 car)	TS	4.44 kW	5286x4369 mm	5400x900x700 mm	800 kg
15 TS (2 cars)		5.55 kW	5286x5445 mm	5500x800x800 mm	1100 kg

